

## Drain plugs for Ex e application




### Drain Plug

- Effectively draining moisture out off an enclosure.
- Prevents damages, such as condensation water.
- Allows the air inside the enclosure to breathe with the surrounding atmosphere.

### Technical Details

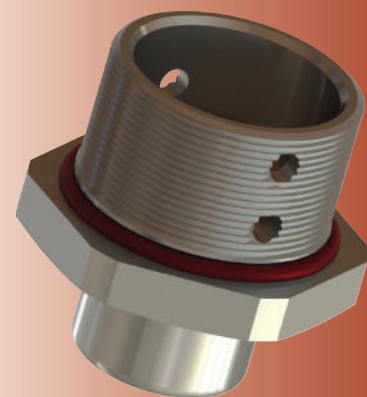
<b>Material</b>	<b>Body ,Cap</b> <b>Membrane</b> <b>O-Ring</b>	Brass, Brass Nickel Plated, Stainless Steel 316L Bronze Silicone
<b>Ingress Protection Rating</b>		IP 66
<b>Operating Temperature</b>	<b>Seal Material</b>	<b>Silicone</b>
<b>Ex e/tb</b>		-60°C to +85°C
<b>Equipment For</b>		• Gas & Dust potentially explosive atmospheres.
<b>Suitable for use in</b>		Group II      Gas Group IIC      ZONE1/ZONE2 Group III      Dust Group IIIC      ZONE21/ZONE 22
<b>Equipment Marking</b>		Ex II 2GD Ex eb IIC Gb Ex tb IIIC Db IP66
<b>Marking Example *</b>		BMD BDRV... CE 0722 Ex II 2GD Ex eb IIC Gb Ex tb IIIC Db Ta -60°C to +85°C IP66 IMQ 13 ATEX 030X IECEx IMQ 14.0003X
<b>Type Protection</b>		Ex eb ; Ex tb
<b>Thread Type</b>		• Metric (M) ISO Pitch 1,5 • Npt (N) ANSI ASME B1.20.1
<b>Accessories</b>		• Lock Nut
<b>Remarks</b>		• O-ring available in Metric outer threads. • Accessories must be ordered separately.

### Approvals

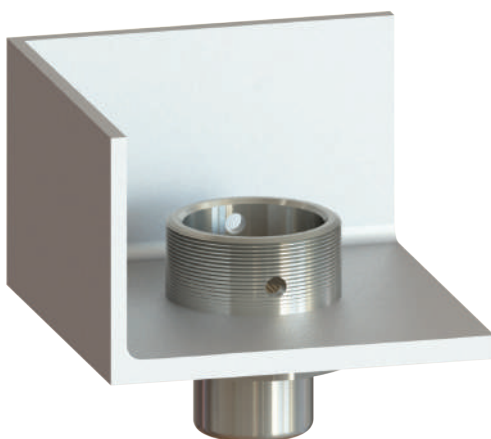
	Certificate Number	Standards
	IMQ 13 ATEX 030X	EN 60079-0:2012+A11:2013 EN 60079-7:2015 EN 60079-31:2014
	IECEx IMQ 14.0003X	IEC 60079-0:2011 Edition:6 IEC 60079-31:2013 Edition:2 IEC 60079-7:2015 Edition:5
	№ TC RU C-TR.AA87.B.00941	ГОСТ 31610.0-2014 ГОСТ IEC 60079-1:2013 ГОСТ IEC 60079-31:2013

-For more information see our webpage.

\* The standard marking consists ATEX & IECEx only. Marking acc. to other standards on request.

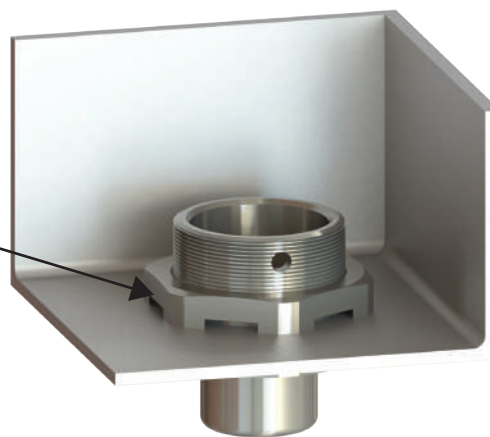


Threaded Hole



Non-Threaded Hole

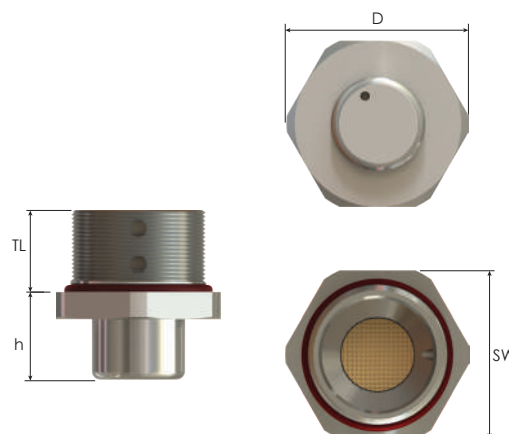
Special Lock Nut  
for Drain Plug



Order Coding				
Part Number	Material	Seal	-	Lock Nut
Mandatory	Mandatory	Mandatory	-	Option
See table	B Brass BN Brass Nickel Plated X Stainless steel 316L	S Silicone	-	L Lock Nut
Example				
BDRV-1M	BN		-	

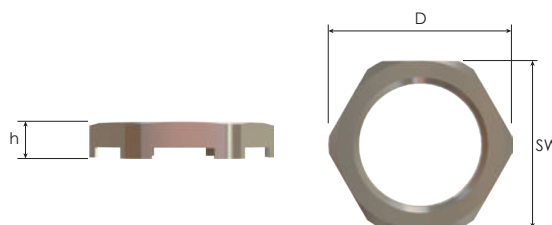
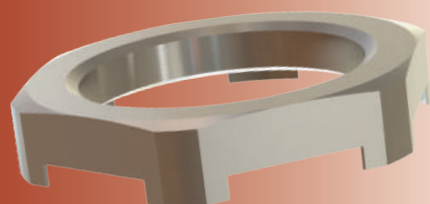
# VIRGO

## Drain Plugs Ex e applications



Thread Type <b>METRIC</b> acc. to ISO 965-3					
Outer Thread Size (Male)	Outer Thread Length	Spanner Width	Outer Ø	Height	Part Number
	TL mm	SW mm	D2 mm	h mm	
M20x1,5	15,0	25	27,5	16,0	<b>BDRV-1M</b>
M25x1,5	15,0	30	33,0	16,0	<b>BDRV-2M</b>

Thread Type <b>NPT</b> acc. to ANSI ASME B1.20.1					
Outer Thread Size (Male)	Outer Thread Length	Spanner Width	Outer Ø	Height	Part Number
	TL mm	SW mm	D2 mm	h mm	
NPT 1/2"	16,0	25	27,5	16,0	<b>BDRV-1N</b>
NPT 3/4"	16,0	30	33,0	16,0	<b>BDRV-2N</b>



## Special Lock Nuts for Drain Plugs

Inner Thread Size (Female)	Spanner Width	Outer Ø	Height	Part Number
	SW mm	D2 mm	h mm	
M20x1,5	25	27,5	5,0	<b>BDRL-03</b>
M25x1,5	30	33,0	5,0	<b>BDRL-04</b>
NPSL 1/2"	25	27,5	5,0	<b>BDRLN-03</b>
NPSL 3/4"	30	33,0	5,0	<b>BDRLN-04</b>