

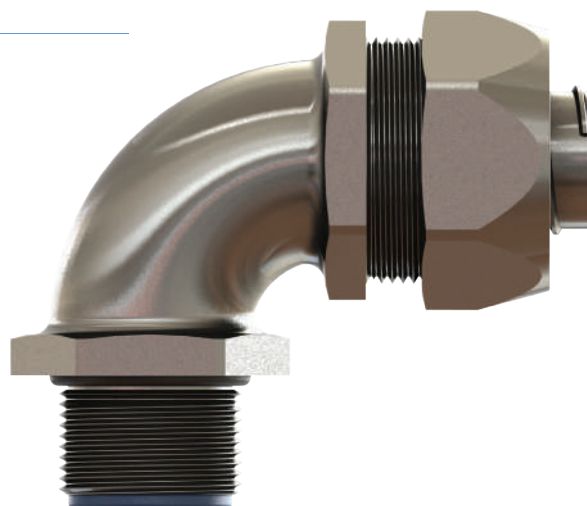
90° Liquid Tight Conduit Fittings Male, Brass

90° Liquid Tight Conduit Fittings, Brass

- Fittings for Sealrite conduits.
- For metal machines and housings.
- For standard industrial applications in harsh environments.
- Great corrosion protection.
- Easy assembly.
- High quality strain relief and sealing, reliable performance for standard industrial applications.

Technical Details

	Body, Cap	Brass Nickel plated		
	Ferrule	Brass Nickel plated or Steel Zinc plated		
Material	Prof.Bushing	Polyamide 6 V2	Metric	PG
	Seal Ring	Polyamide 6 V2		
	O-Ring	NBR		
Ingress Protection Rating		IP 65		
		IP 66		
Operating Temperature	Permanent			
		-45 °C to +105 °C		
Cable Type	Non armoured			
Thread Type		• Metric EN 60423		
		• PG DIN 40430		
		• NPT ANSI B1.20.1		
Accessories	• Lock nuts			
Remarks	• Also available in Stainless Steel			
	• O-ring only available in Metric and PG threads.			
	• Accessories must be ordered separately.			



90° Liquid Tight Conduit Fittings Male, Brass



Thread Type **METRIC** acc. to EN 60423

Outer Thread Size (Male)	For Sealrite Nominal Size	Outer Thread Length	Spanner Width		Outer Ø	Inner Ø	Part Number	Minimum Order Quantity
			Cap	Body				
		TL mm	SW Cap mm	SW Body mm	D mm	ID mm		
M16x1,5	5/16"	11,5	26	22	29,0	8,3	BBFM-02(S) 90	200
	3/8"	11,5	26	22	29,0	10,2	BBFM-02 90	200
M20x1,5	3/8"	13,0	26	22	29,0	10,2	BBFM-03(S) 90	200
	1/2"	13,0	29	27	32,7	13,5	BBFM-03 90	200
M25x1,5	3/4"	15,0	35	33	39,0	18,5	BBFM-04 90	100
M32x1,5	1"	15,0	45	42	50,0	23,5	BBFM-05 90	70
M40x1,5	1 1/4"	16,0	54	51	60,0	31,8	BBFM-06 90	50
M50x1,5	1 1/2"	18,0	63	60	69,3	36,8	BBFM-07 90	24
M63x1,5	2"	20,0	77	74	85,0	47,8	BBFM-08 90	16

Thread Type **PG** acc. to DIN 40430

Outer Thread Size (Male)	For Sealrite Nominal Size	Outer Thread Length	Spanner Width		Outer Ø	Inner Ø	Part Number	Minimum Order Quantity
			Cap	Body				
		TL mm	SW Cap mm	SW Body mm	D mm	ID mm		
PG 11	5/16"	11,5	26	22	29,0	8,3	BBFB-03(S) 90	200
	3/8"	11,5	26	22	29,0	10,2	BBFB-03 90	200
PG 13,5	3/8"	11,5	26	22	29,0	10,2	BBFB-04 90	200
PG 16	1/2"	13,0	29	27	32,7	13,5	BBFB-05 90	200
PG 21	3/4"	15,0	35	33	39,0	18,5	BBFB-06 90	100
PG 29	1"	15,0	45	42	50,0	23,5	BBFB-07 90	70
PG 36	1 1/4"	16,0	54	51	60,0	31,8	BBFB-08 90	50
PG 42	1 1/2"	18,0	63	60	69,3	36,8	BBFB-09 90	24
PG 48	2"	20,0	77	74	85,0	47,8	BBFB-10 90	16

Thread Type **NPT** acc. to ANSI B1.20.1

Outer Thread Size (Male)	For Sealrite Nominal Size	Outer Thread Length	Spanner Width		Outer Ø	Inner Ø	Part Number	Minimum Order Quantity
			Cap	Body				
		TL mm	SW Cap mm	SW Body mm	D mm	ID mm		
NPT 1/2"	3/8"	13,0	26	22	29,0	10,2	BBFN-02(S) 90	200
	1/2"	13,0	29	27	32,7	13,5	BBFN-02 90	200
NPT 3/4"	3/4"	15,0	35	33	39,0	18,5	BBFN-03 90	100
NPT 1"	1"	15,0	45	42	50,0	23,5	BBFN-04 90	70
NPT 1 1/4"	1 1/4"	16,0	54	51	60,0	31,8	BBFN-05 90	50
NPT 1 1/2"	1 1/2"	18,0	63	60	69,3	36,8	BBFN-06 90	24
NPT 2"	2"	20,0	77	74	85,0	47,8	BBFN-07 90	16