

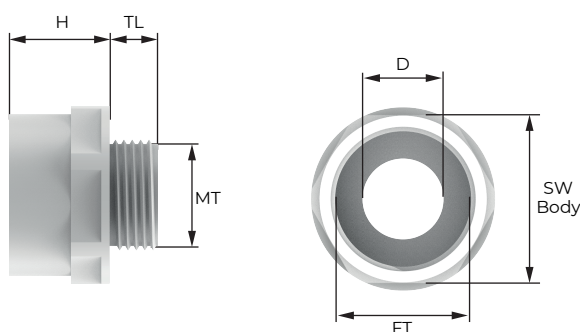
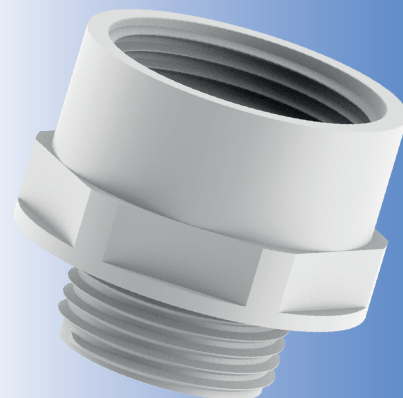
Enlarger, Polyamide

General

- Enlargers for the transition of different thread types and sizes..

Technical Details

Material	Polyamide 6, 30% Glass Fibre
Thread Type	<ul style="list-style-type: none"> • Metric • PG
Accessories	<ul style="list-style-type: none"> • Locknut • Gasket (Washer)
Remarks	<ul style="list-style-type: none"> • We recommend the use gaskets to ensure IP rating for rough surfaces or through holes. • Accessories must be ordered separately.



Thread Type **METRIC** acc. to EN 60423

Outer Thread		Spanner Width SW mm	Length TL mm	Height h mm	Outer Ø D mm	Part Number	
Male Thread (MT)	Female Thread (FT)					RAL 7035 light grey	RAL 9005 black
M12x1,5	M16X1,5	20	9,0	18,0	6,0	PE02M01M-1	PE02M01M-2
M16x1,5	M20X1,5	24	8,0	12,5	11,0	PE01M1M-1	PE01M1M-2
M20x1,5	M25X1,5	29	9,0	18,0	14,0	PE1M2M-1	PE1M2M-2
M25x1,5	M32X1,5	36	10,0	18,0	19,0	PE2M3M-1	PE2M3M-2
M32x1,5	M40X1,5	46	12,0	18,0	26,0	PE3M4M-1	PE3M4M-2
M40x1,5	M50X1,5	55	12,0	18,0	32,0	PE4M5M-1	PE4M5M-2
M50x1,5	M63X1,5	68	14,0	18,0	42,0	PE5M6M-1	PE5M6M-2

Thread Type **PG** acc. to DIN 40430

Outer Thread		Spanner Width SW mm	Length TL mm	Height h mm	Outer Ø D mm	Part Number	
Male Thread (MT)	Female Thread (FT)					RAL 7035 light grey	RAL 9005 black
PG 7	PG 9	19	8,0	13,0	8,5	PE1P2P-1	PE1P2P-2
PG 9	PG 11	22	8,0	15,0	10,0	PE2P3P-1	PE2P3P-2
PG 11	PG 13,5	24	9,0	18,0	13,0	PE3P4P-1	PE3P4P-2
PG 11	PG 16	27	8,0	16,5	12,5	PE3P5P-1	PE3P5P-2
PG 13,5	PG 16	27	10,0	18,0	14,0	PE4P5P-1	PE4P5P-2
PG 16	PG 21	33	10,0	18,0	17,0	PE5P6P-1	PE5P6P-2
PG 21	PG 29	42	12,0	18,0	22,0	PE6P7P-1	PE6P7P-2
PG 29	PG 36	53	12,0	18,0	30,0	PE7P8P-1	PE7P8P-2
PG 36	PG 42	60	14,0	18,0	39,5	PE8P9P-1	PE8P9P-2
PG 42	PG 48	65	13,0	28,0	45,5	PE9P10P-1	PE9P10P-2