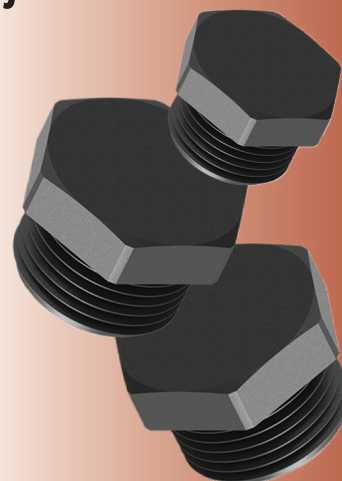


## Polyamide Hexagonal Plugs for Ex e Applications

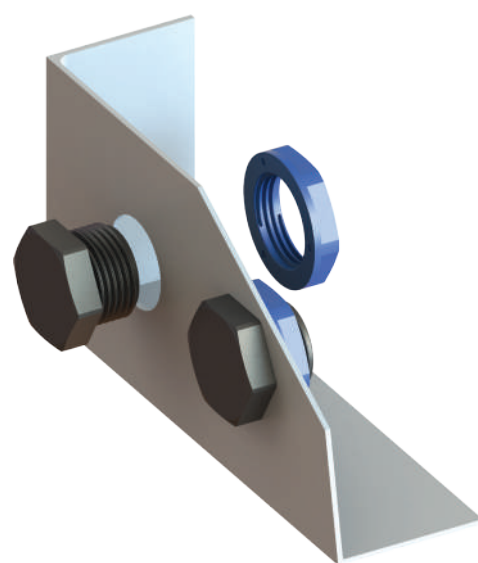
# 4 joule

# DRACO

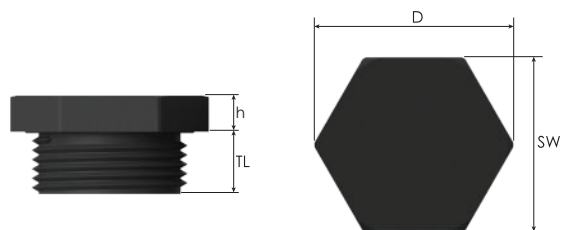


Technical Details		
<b>Material</b>	Body: PA 6 (Polyamide 6) O-ring: CR ( Chloroprene ), Silicone	
<b>Ingress Protection Rating</b>	IP 68 - 5 Bar, 30 min IP 66	
<b>Operating Temperature</b>	<b>O-ring Material</b> <b>CR ( Chloroprene )</b> <b>Silicone</b>	
<b>Ex eb/tb / Ex tb</b>	-40°C to +80°C      -40°C to +80°C	
<b>Ex i</b>	-40°C to +70°C      -40°C to +70°C	
<b>Equipment For</b>	<ul style="list-style-type: none"> <li>Gas &amp; Dust potentially explosive atmospheres.</li> <li>Cable glands should be also used for intrinsically safe circuits Ex-i. These cable glands shall have a <b>light blue</b> colored lock nut. The symbol "I" will be added beside of the "TP" for order processing.</li> </ul>	
<b>Suitable for use in</b>	Group II      Gas Group IIC      ZONE1/ZONE2 Group III      Dust Group IIIC      ZONE21/ZONE 22	
<b>Equipment Marking</b>	Ex II 2GD Ex eb IIC Gb / Ex tb IIIC Db	
<b>Marking Example *</b>	BMD TP-X... CE 0722  II 2GD Ex e IIC Gb Ex tb IIIC Db IP66/68 Ta -40°C to +80°C IMQ 13 ATEX 010X IECEx IMQ 13.0003X	
<b>Impact Test Result</b>	4J	
<b>Thread Type</b>	<ul style="list-style-type: none"> <li>Metric (M) ISO Pitch 1,5</li> <li>Npt (N) ANSI ASME B1.20.1</li> </ul>	
<b>Accessories</b>	<ul style="list-style-type: none"> <li>Lock nuts</li> <li>Gaskets (Washers)</li> </ul>	
<b>Remarks</b>	<ul style="list-style-type: none"> <li>We recommend the use of locknuts and gaskets to ensure IP rating for rough surfaces or through holes.</li> <li>Accessories must be ordered separately.</li> </ul>	
Approvals	Certificate Number	Standards
	IMQ 13 ATEX 010X	EN 60079-0:2012 + A11:2013 EN 60079-7:2015 EN 60079-31:2014
	IECEx IMQ 13.0003X	IEC 60079-0:2011 Edition:6 IEC 60079-31:2013 Edition:2 IEC 60079-7:2006 Edition: 4
		ISO 4892-2
	№ TC RU C-TR.AA87.B.00941	ГОСТ 31610.0-2014 ГОСТ IEC 60079-1:2013 ГОСТ IEC 60079-31:2013
	DNV 12.0051 X	ABNT NBR IEC 60079-0:2013 ABNT NBR IEC 60079-7:2008 ABNT NBR IEC 60079-31:2011
	E-14045	IEC/EN60079-0 IEC/EN60079-7 IEC/EN60079-31 IEC/EN 62444

-For more information see our webpage.  
\* The standard marking consists ATEX & IECEx only. Marking acc. to other standards on request.



Order Coding		
<b>Part Number</b>	-	<b>Gasket (Washer)</b> <b>Lock Nut</b>
Mandatory	-	Option      Option
See table	-	WC Chloroprene      L Lock nut WF Fiber WS Silicone
*Part number for blue cap is TPI-..		
Example		
TP-X02	-	WC      L
*TPI-X02	-	



# DRACO

## Polyamide Hexagonal Plugs for Ex e Applications

Thread Type <b>METRIC</b> acc. to ISO 965-3					
Outer Thread Size (Male)	Outer Thread Length	Spanner Width	Outer Ø	Height	Part Number
	TL mm	SW mm	D mm	h mm	
M12x1,5	10,0	15	17,0	5,0	TP-X02
M16x1,5	11,0	19	22,0	4,3	TP-X01
M20x1,5	11,0	23	26,0	6,0	TP-X1
M25x1,5	10,0	28	32,0	5,8	TP-X2
M32x1,5	15,0	36	41,5	7,8	TP-X3
M40x1,5	18,0	46	53,0	8,5	TP-X4
M50x1,5	18,0	55	63,5	9,5	TP-X5
M63x1,5	18,0	69	79,5	9,5	TP-X6

See Example "A" for IP protection degree and clamping note:

The plugs Ex e II can be used with circuits Ex i. These cable glands should have a lock nut painted **light blue**. The plugs must be supplied with the flat washer for IP protection degree.

