

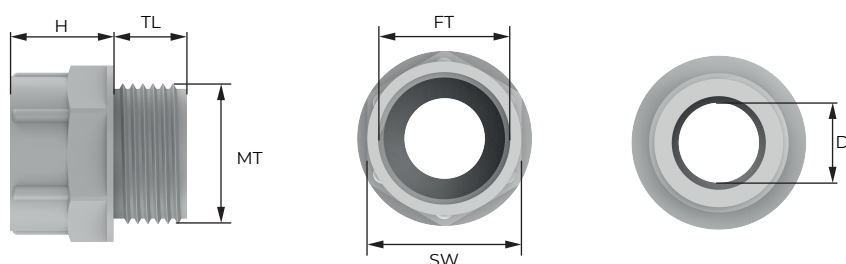
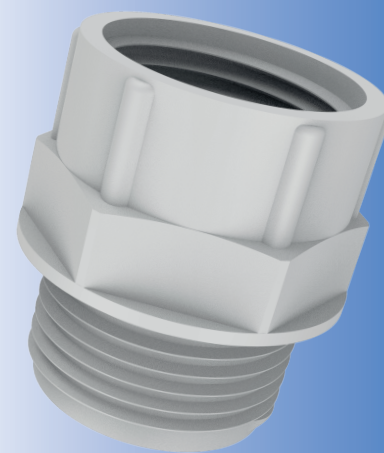
Adapter, Polyamide

General

- Adaptors for the transition of different thread sizes.

Technical Details

Material	Polyamide 6, 30% Glass Fibre
Thread Type	<ul style="list-style-type: none"> • Metric • PG
Accessories	<ul style="list-style-type: none"> • Locknut • Gasket (Washer)
Remarks	<ul style="list-style-type: none"> • We recommend the use gaskets to ensure IP rating for rough surfaces or through holes. • Accessories must be ordered separately.



Thread Type **METRIC & PG** acc. to EN 60423

Outer Thread		Spanner Width SW mm	Length TL mm	Height h mm	Outer Ø D mm	Part Number	
Male Thread (MT)	Female Thread (FT)					RAL 7035 light grey	RAL 9005 black
M12x1.5	PG 7	15	8,0	13,0	7,5	PA02M1P-1	PA02M1P-2
M12x1.5	PG 9	19	11,0	12,5	8,0	PA02M2P-1	PA02M2P-2
M16x1.5	PG 9	19	11,0	13,5	9,5	PA01M2P-1	PA01M2P-2
M20x1.5	PG 11	22	11,0	15,5	11,0	PA1M3P-1	PA1M3P-2
M20x1.5	PG 13,5	24	11,0	15,0	13,0	PA1M4P-1	PA1M4P-2
M20x1.5	PG 16	27	11,0	17,0	14,5	PA1M5P-1	PA1M5P-2
M25x1.5	PG 16	27	11,0	18,0	15,5	PA2M5P-1	PA2M5P-2
M25x1.5	PG 21	32	11,0	20,0	19,5	PA2M6P-1	PA2M6P-2
M32x1.5	PG 21	36	10,0	15,0	20,5	PA3M6P-1	PA3M6P-2
M32x1.5	PG 29	42	11,0	22,0	26,5	PA3M7P-1	PA3M7P-2
M40x1.5	PG 29	42	11,0	23,0	28,0	PA4M7P-1	PA4M7P-2
M50x1.5	PG 36	53	11,0	26,0	34,0	PA5M8P-1	PA5M8P-2
M50x1.5	PG 42	60	11,0	28,0	40,0	PA5M9P-1	PA5M9P-2
M63x1.5	PG 48	65	11,0	29,0	45,0	PA6M10P-1	PA6M10P-2

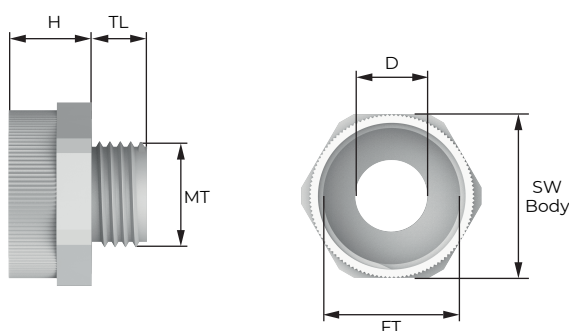
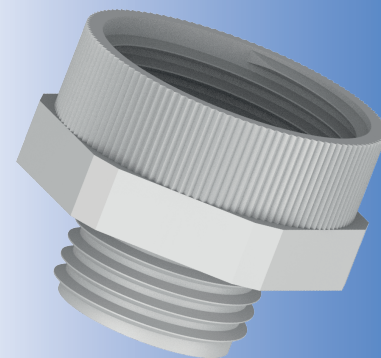
Adapter, Polyamide

General

- Adaptors for the transition of different thread sizes.

Technical Details

Material	Polyamide 6, 30% Glass Fibre
Thread Type	<ul style="list-style-type: none"> Metric PG
Accessories	<ul style="list-style-type: none"> Locknut Gasket (Washer)
Remarks	<ul style="list-style-type: none"> We recommend the use gaskets to ensure IP rating for rough surfaces or through holes. Accessories must be ordered separately.



Thread Type PG & METRIC acc. to EN 60423

Outer Thread		Spanner Width SW mm	Length TL mm	Height h mm	Outer Ø D mm	Part Number	
Male Thread (MT)	Female Thread (FT)					RAL 7035 light grey	RAL 9005 black
PG 7	M12x1.5	15	8,0	12,0	7,5	PA1P02M-1	PA1P02M-2
PG 7	M16x1.5	20	8,0	12,0	7,5	PA1P01M-1	PA1P01M-2
PG 9	M12x1.5	19	8,0	12,0	10,5	PA2P02M-1	PA2P02M-2
PG 9	M16x1.5	20	8,0	12,0	10,5	PA2P01M-1	PA2P01M-2
PG 9	M20x1.5	24	8,0	12,0	10,5	PA2P1M-1	PA2P1M-2
PG 11	M16x1.5	22	8,0	12,0	13,5	PA3P01M-1	PA3P01M-2
PG 11	M20x1.5	24	8,0	12,0	13,5	PA3P1M-1	PA3P1M-2
PG 13.5	M16x1.5	24	9,0	12,0	15,0	PA4P01M-1	PA4P01M-2
PG 13.5	M20x1.5	24	9,0	12,0	15,0	PA4P1M-1	PA4P1M-2
PG 13.5	M25x1.5	30	9,0	12,5	15,0	PA4P2M-1	PA4P2M-2
PG 16	M20x1.5	27	10,0	12,0	17,5	PA5P1M-1	PA5P1M-2
PG 16	M25x1.5	30	10,0	12,5	17,5	PA5P2M-1	PA5P2M-2
PG 21	M25x1.5	33	11,0	12,5	22,5	PA6P2M-1	PA6P2M-2
PG 21	M32x1.5	37	11,0	14,5	22,5	PA6P3M-1	PA6P3M-2
PG 29	M32x1.5	42	11,0	14,5	30,5	PA7P3M-1	PA7P3M-2
PG 29	M40x1.5	45	11,0	14,5	30,5	PA7P4M-1	PA7P4M-2